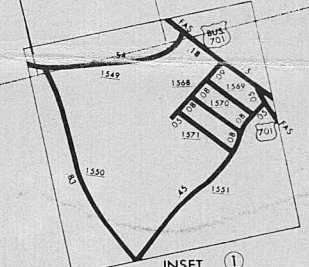
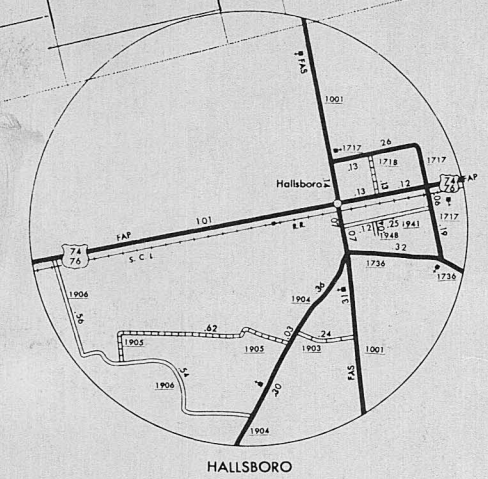
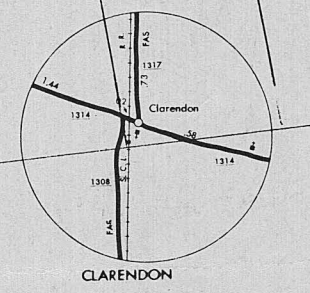
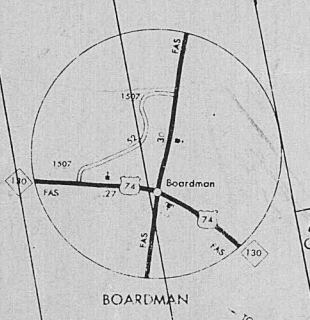


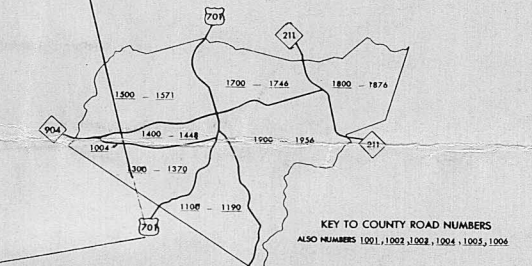
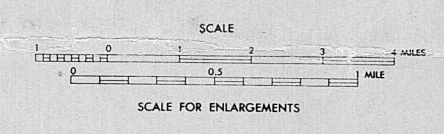
A B C D E F G H I J K L M N O P Q R S T U V W X Y Z



- LEGEND**
- IMPASSIBLE ROAD OR TRAIL
 - GRADED OR UNIMPROVED ROAD
 - SOIL, GRAVEL OR STONE SURFACED ROAD
 - HARD SURFACED ROAD
 - 4 LANE UNIMPROVED HIGHWAY
 - DIVIDED HIGHWAY
 - HIGHWAY WITH FRONTAGE ROADS
 - FULL CONTROL ACCESS
 - FEDERAL AID INTERSTATE ROAD
 - FEDERAL AID PRIMARY ROAD
 - FEDERAL AID SECONDARY ROAD
 - NON-SYSTEM ROAD
 - PROJECTED LOCATION
 - INTERSECTION DISTANCE
 - TRAFFIC CIRCLE
 - HIGHWAY INTERCHANGE
 - DETAILED HIGHWAY INTERCHANGE
 - INTERSTATE HIGHWAY
 - U.S. NUMBERED HIGHWAY
 - N.C. NUMBERED HIGHWAY
 - SECONDARY ROAD NUMBER
 - BARBED WIRE FENCE
 - BARBED WIRE FENCE USED BY SINGLE OPERATING COMPANY
 - BARBED WIRE FENCE USED BY MORE THAN ONE OPERATING COMPANY ON SAME OR ADJACENT RIGHTS OF WAY
 - RAILROAD STATION
 - GRADE CROSSING
 - UNDERPASS
 - OVERPASS
 - RAILROAD TUNNEL
 - ARMY, NAVY OR MARINE CORPS FIELD
 - COAST GUARD STATION
 - MARSHED AUXILIARY FIELD
 - HANGAR ON FIELD "H" IN SYMBOL
 - DOCK, PER OR LANDING
 - FREE OR TOLL FERRY
 - LIGHT NAUTICAL
 - LIGHTHOUSE
 - COAST GUARD STATION
 - CANAL
 - NARROW STREAM
 - WIDE STREAM
 - DAM WITH LOCK
 - DAM
 - RESERVOIR, POND OR LAKE
 - PERMANENT FEAR, HORIZONTAL INDICATE ELEVATION
 - ROAD THROUGH MOUNTAIN PASS
 - HIGHWAY BRIDGE OVER 20 FT
 - DRAW SPAN ON BRIDGE
 - HIGHWAY TUNNEL
 - ROAD
 - STATE LINE
 - COUNTY LINE
 - CITY LIMITS
 - RESERVATION OR PARK BOUNDARY
 - INSET AREA
 - DELIMITED AREA, POPULATION EST.
 - COUNTY SEAT
 - OTHER TOWNS AND VILLAGES
 - TRIANGULATION STATION
 - INCORPORATED CITY OR VILLAGE, ORGANIZED
 - CHURCH
 - CHURCH WITH CEMETERY
 - SCHOOL
 - CORRECTIONAL OR PENAL INSTIT.
 - STATE HIGHWAY CASE-GC
 - HIGHWAY SUB-OFFICE
 - REST AREA



1972
COLUMBUS COUNTY
 NORTH CAROLINA
 PREPARED BY THE
 NORTH CAROLINA STATE HIGHWAY COMMISSION
 PLANNING AND RESEARCH DEPARTMENT
 IN COOPERATION WITH THE
 U.S. DEPARTMENT OF TRANSPORTATION
 FEDERAL HIGHWAY ADMINISTRATION



NOTE: MAP INCLUDES ONLY STATE MAINTAINED ROADS OR IMPORTANT NON-SYSTEM ROADS. MILEAGE NOT SHOWN ON FRONTAGE ROADS. ROADS SHOWN AS OF JAN. 1, 1970.